

Monday, 17th December 2018

Release (Version: 3.2.9011)

- **Geofence Dwell Time alerts** for tracking assets disposition
- ABS/EBS (braking distance fields) for trailers added to **Reefer Manager** and **Asset Manager**
- a new **Asset Manager**, can be switched on for customers wanting to use the new **Container Chassis Trailer (CCT)** asset type

Thursday, 26th July 2018

Release (Version: 3.1.8861)

- further incremental extensive improvements to loading and refresh speeds
- restored tab session
- integration of *Google Maps* into all mapping functionality
- enhancements to weather overlays

Monday, 7th May 2018

Release (Version: 3.0.8757)

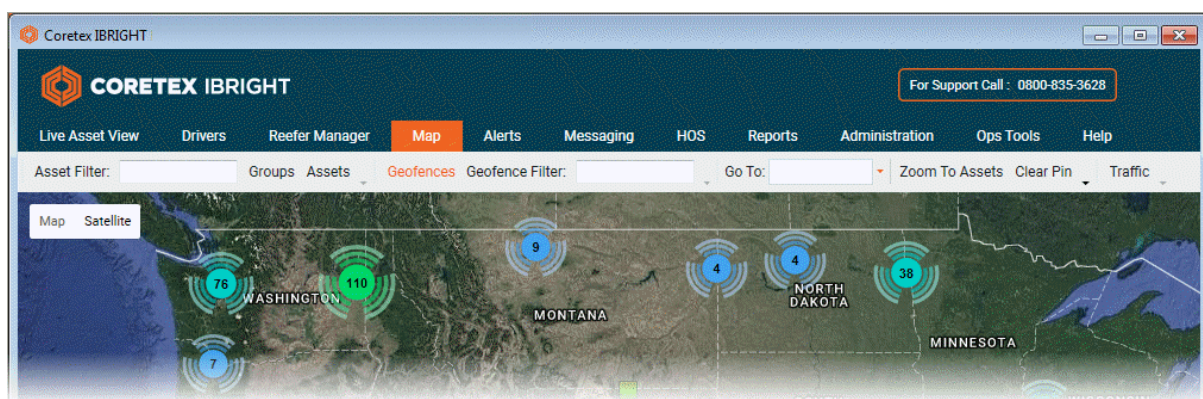
- compatibility change required for Microsoft operating system patch

Monday, 26th Mar 2018

Release (Version: 3.0.8724)

New Features:

- user interface rebranded with new system name **Coretex IBRIGHT** and logo
- whole new look and feel with menus and tab pages



- implementation of Google Maps with clustering of assets, traffic and weather overlays
- new *Administration* tab settings
- Assets and Drivers toggle name buttons in *Map View*
- moving assets count (dynamic counter in bottom right of *Map View* page)
- moving assets icons change color with speed of asset

- live two-way interactive reefer controls available inside McLeod *LoadMaster*
- enterprise name shown in the title bar of main screen

Updates/Fixes

- improved performance enhancements in *Map View* with asset updates
- overall performance improvements
- *Reefer Manager* multi-compartment control and Batch commands enhancements

Friday, 18th Nov 2016

Release (Version: 2.5.8176.49101) of ibright Enterprise

New Features

- user configuration of Asset Statuses
- visibility of asset status
- filter by asset status
- asset status reporting

Updates/Fixes

- itelematic download portal's Wiki links working as intended
- *Street View* mode in Maps operating correctly
- Assets tab consistently updating location
- City column in *Reefer Manager* tab updating correctly
- Reefer Voltage display in *Stingray* working as intended
- Compartment mode now displaying correctly after shutdown
- Bulk lines label display 580 operating correctly
- New John Dory logger not causing API error
- Flex temperature alerts triggering correctly.
- Reverse Geo-coding - Location information precision improved
- RUC Additional License Display and Current License display logic changes
- Asset Status functionality enhanced.
- Asset status dropping off issue resolved. Power Saver Column has been added under Asset and Reefer Manager Tabs. CRANKPROTECTION ACTIVE ALERTS available till the main release (auto-update/GO-Live release)
- Satellite Maps loading correctly

Friday, 14th Jul 2016

Release (Version: 2.4.8022) of ibright Enterprise

Features

- *Help* portal tab page available (providing online help) and also at help.ibright.info
- *Drivers* tab page available (driver details removed from Assets tab into own tab page)
- Humidity Alerts - added template values
- Integration of Mi-Jack's Power In-Lock internal locks
- veroFresh integration - Simulated Temperatures
- Humidity sensor reporting and Playback graph summary
- Fuel Sensor Check report added
- Suite of Route reports added

Updates

- Reefer Mobile App (access to reefer assets and status on mobile devices)
- Reefer overall statuses and compartment modes
- Reefer Manager tab page new columns
- Reefer reports - Humidity sensor column added to reports
- veroFresh integration - Simulated Temperature column added to Reefer History Detail report

Fixes

- Certain columns no longer cause partial data output when saving Reefer data.
- Assets tab entries showing Engine Speed: (instead of Fan Speed:)
- Assets tab entries showing Status: (instead of Operational Mode:)
- Coretex logo/details put into RUCHO Email template and Help portal page
- Object referencing error when starting ibright Enterprise no longer appears
- ibright Enterprise reporting ibright model TMU-1500 correctly in "Assign Telematic Unit" screen
- ibright Enterprise sorting issue with the Probe columns resolved
- Some ibright Enterprise asset details are not being loaded in some enterprises (RSALE, NORDI, GSFD...) for display in Assets tab now resolved with entries all appearing
- ibright Enterprise sorting issue in *Reefer Manager* tab with the City, State, Probe, Engine Hours and Serial Number columns now all sort correctly
- Simulated Temperature columns in Reefer Manager tab are now active only if selected for display in Edit Columns screen
- Google maps now being drawn correctly
- When Reefer Status is Off, Mode/Set/Unit columns in Assets/Reefer Manager tabs updated correctly
- Humidity Alerts can now be implemented in Alerts subscription menu

- Sleep status correctly displayed on *Assets* and *Reefer Manager* tab pages
- Checkmate reports detecting regional settings and displaying appropriate units (metric/imperial)
- Flagged events filtered out of Checkmate reports
- Humidity columns sort correctly on *Reefer Manager* tab
- Map tab satellite map displays correctly
- Reefer reports display status correctly
- Grouping by **Start Date** on *Driver Behaviour Management Summary* report operating as intended
- Circle Geofences drawn correctly in *Map View* and Geofence editor
- Reefer Manager tab correctly displaying Start/Stop when appropriate
- Reefer Two Way Command report now includes commands submitted in a batch
- Reefers were reporting an overall status of IDLE when OFF in a previous beta release - now both *Assets* and *Reefer Manager* tabs correctly display all status updates
- Reefer Mobile App - Two way reefer commands now don't freeze browser on some phones.

Note: Please refer the ibright Enterprise v2.4.8022.42688 Release Notes for more details.

Thursday, 17th Oct 2013

Release Patch (Version: 2.3.7173) of ibright Enterprise

Resolved Issues

Performance Improvements for loading of asset states on app startup